

**DATE:** 11 September 2023  
**DESIGNER:** D.Larkin  
**PROJECT No:** KCC-2023-R1  
**PROJECT NAME:** St Evins Monasterevin



Notes:  
7 No. 6m Octagonal Steel Columns  
7 No. LEDs  
1 No. MP (Location TBC)  
1 No. NC4  
Existing Lum Ds only included to prove Design Compliance  
Cables & Accessories

## **Outdoor Lighting Report**

The lighting design has achieved the following Lighting Standards:  
**P4= IS EN 13201- 2:2015 / BS5489-1:2020**

“Electric Skyline confirms that this Design complies with relevant Lighting Standards. However as the Design was prepared on a Desktop basis, Electric Skyline assumes no responsibility or liability for any errors or omissions which may occur due to varying conditions on the Project site. This Design is provided on a provisional basis only, with no guarantees of completeness or accuracy until on-site surveys are completed by associated Contractors and all Safety Rules and Codes of Practice have been taken into consideration.”

**PREPARED BY:** Electric Skyline Ltd  
CRF House,  
Dalton St,  
Claremorris,  
Co. Mayo,  
F12 N2Y2  
e-mail: [info@electricskyline.ie](mailto:info@electricskyline.ie)  
website: [www.electricskyline.ie](http://www.electricskyline.ie)

## Layout Report

### General Data

Dimensions in Metres Angles in Degrees  
Grid Origin 662873.5m x 710962.5m  
Area 203.6m x 78.7m  
Sample Spacing 1.50m x 1.48m

### Luminaires

#### Luminaire A Data



Supplier	Urbis Schreder
Type	AXIA 3.1 5266 Integrated lenses 16 OSLO N SQUARE GIANT@600mA
Lamp(s)	16 OSLO N SQUARE GIANT@600mA WW 730 230V 01-37-043
LampFlux(klm)/Colour	3.85 WW 3000K/70
File Name	AXIA 3.1 5266 16 OSLO N SQUARE GIANT@600mA WW 730 230V 01-37-043
Maintenance Factor	0.80
Imax70,80,90(cd/klm)	1142.4, 192.6, 0.0
No. in Project	1

#### Luminaire B Data



Supplier	Urbis Schreder
Type	AXIA 3.1 5267 Integrated lenses 16 OSLO N SQUARE GIANT@600mA
Lamp(s)	16 OSLO N SQUARE GIANT@600mA WW 730 230V 01-37-043
LampFlux(klm)/Colour	3.77 WW 3000K/70
File Name	AXIA 3.1 5267 16 OSLO N SQUARE GIANT@600mA WW 730 230V 01-37-043
Maintenance Factor	0.80
Imax70,80,90(cd/klm)	985.2, 145.1, 0.0
No. in Project	4

#### Luminaire C Data



Supplier	Urbis Schreder
Type	AXIA 3.1 5296 Integrated lenses 16 OSLO N SQUARE GIANT@300mA
Lamp(s)	16 OSLO N SQUARE GIANT@300mA WW 730 230V
LampFlux(klm)/Colour	2.08 WW 3000K/70
File Name	AXIA 3.1 5296 16 OSLO N SQUARE GIANT@300mA WW 730 230V
Maintenance Factor	0.80
Imax70,80,90(cd/klm)	1243.8, 38.3, 0.0
No. in Project	2

#### Luminaire D Data



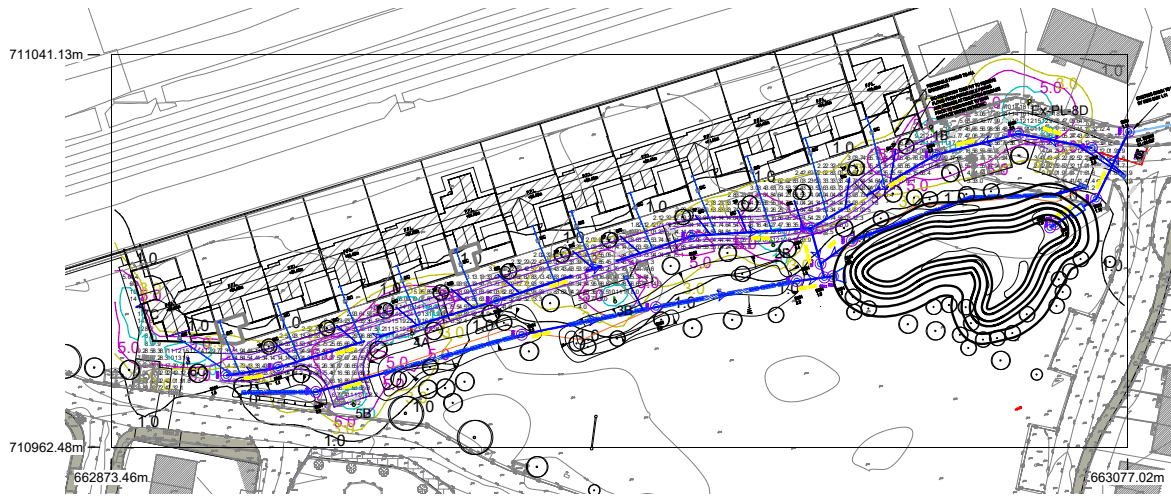
Supplier	_Historic Lanterns
Type	QB2B1055.4A + QB2M
Lamp(s)	55W SOX
Lamp Flux (klm)	8.10
File Name	r0004957.cib
Maintenance Factor	0.80
Imax70,80,90(cd/klm)	179.3, 135.2, 67.6
No. in Project	3

### Layout

ID	Type	X	Y	Height	Angle	Tilt	Cant	Out-reach	Target X	Target Y	Target Z
1	B	663037.62	711026.72	6.00	283.00	0.00	0.00	0.35			
2	B	663006.04	711003.03	6.00	106.00	5.00	0.00	0.35			
3	B	662974.37	710991.69	6.00	102.00	5.00	0.00	0.35			
4	A	662933.74	710985.31	6.00	110.00	5.00	0.00	0.35			
5	B	662922.01	710970.99	6.00	102.00	5.00	0.00	0.35			
6	C	662888.87	710979.51	6.00	88.00	5.00	0.00	0.35			
7	C	662879.37	710990.83	6.00	194.00	5.00	0.00	0.35			
Ex-PL-8	D	663057.36	711031.82	6.00	250.00	5.00	0.00	0.70			
Ex PL-9	D	663093.82	711031.19	6.00	284.00	5.00	0.00	0.70			
Ex PL-10	D	663087.33	711006.00	6.00	167.00	5.00	0.00	0.70			

## Horizontal Illuminance (lux)

Grid 1



### Results

Eav	5.44
Emin	1.15
Emax	24.99
Emin/Emax	0.05
Emin/Eav	0.21